

Vattenfall Wind Power Ltd

Thanet Extension Offshore Wind Farm

Appendix 38E to Deadline 1 Submission: Works
Plan (Offshore): RLB Comparison

Relevant Examination Deadline: 1

Submitted by Vattenfall Wind Power Ltd

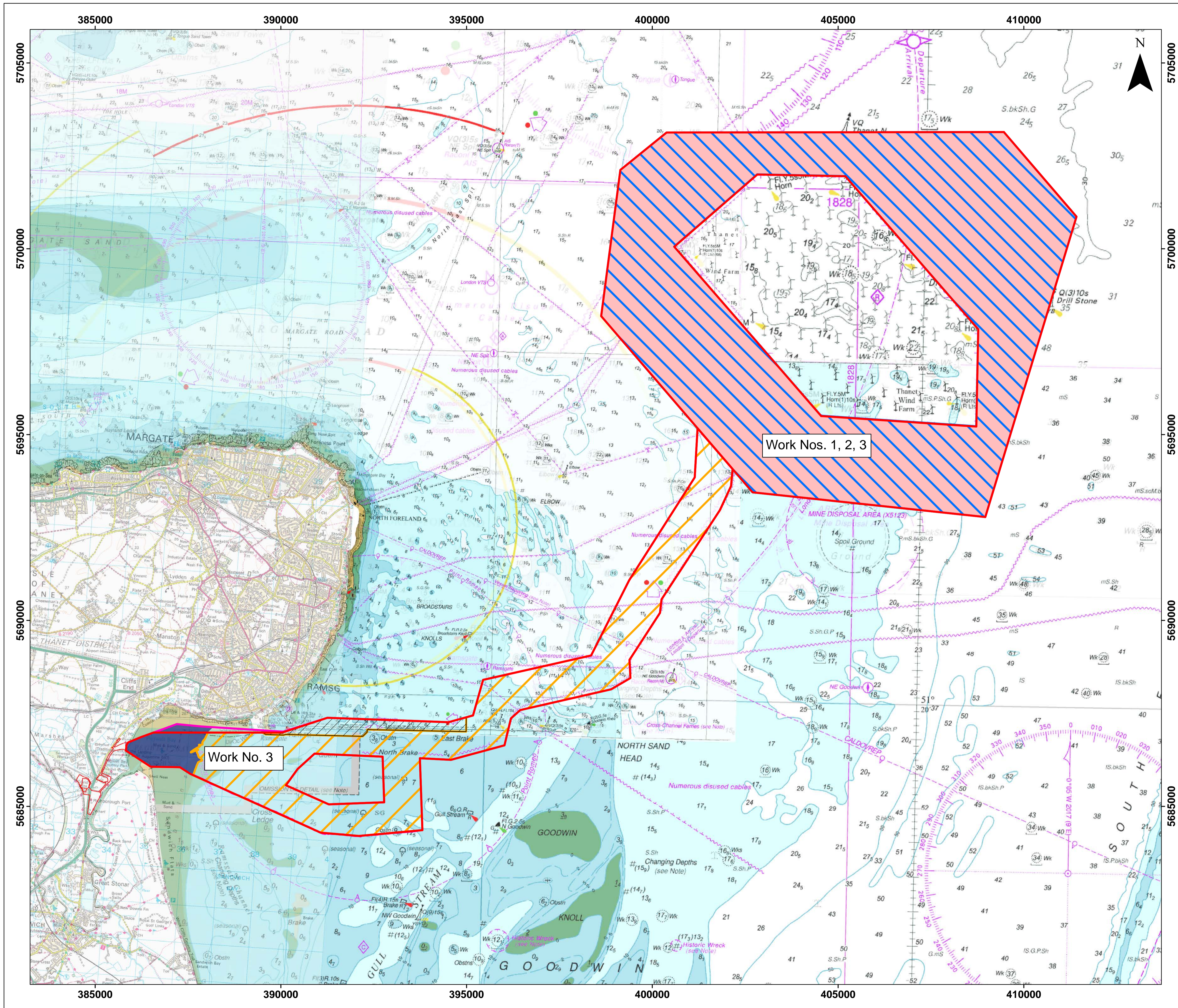
Date: January 2019

Revision A

Drafted By:	GoBe Consultants Ltd
Approved By:	Daniel Bates
Date of Approval:	January 2019
Revision:	A

Revision A	Original Document submitted to the Examining Authority
N/A	
N/A	
N/A	

Copyright © 2019 Vattenfall Wind Power Ltd
All pre-existing rights retained










GoBe VATTENFALL

THANET EXTENSION OFFSHORE WIND FARM

Works Plan (Offshore): RLB Comparison

Document reference: 2.5
APFP Regulation: 5(2)(j)

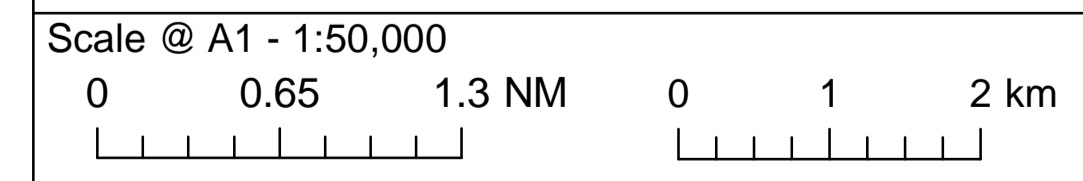
Legend

-  Updated Order Limits
-  Original Order limits
-  Cable Exclusion Area
-  Work No. 1
-  Work No. 2
-  Work No. 3
-  Work No. 3A

Datum: ETRS 1989
Projection: UTM31N



© Vattenfall Wind Power Ltd 2018. © Crown copyright and database rights 2017 Ordnance Survey 0100031673.
© Crown Copyright, 2016. All rights reserved License No. EK001-412013. NOT TO BE USED FOR NAVIGATION



Drg No	2.5_TEOW_Offshore_works_plan_comparison		
Rev	B	Date	11/01/2019
By	RM	Check	SL